

DESSERT
FINANCE



Wifi Doge Coin (WifiDoge)

BEP-20 Audit

Performed at block **11857352**

PERFORMED BY DESSERT FINANCE
FOR CONTRACT ADDRESS: **0xd09e72BBEF22e3e6534BDEcD88a86ae15F017358**

INITIAL DISCLAIMER

Dessert Finance provides due-diligence project audits for various BSC projects. Dessert Finance in no way guarantees that a project will not remove liquidity, sell off team supply, or otherwise exit scam.

Dessert Finance does the legwork and provides public information about the project in an easy-to-understand format for the common person.

Agreeing to a project audit can be seen as a sign of confidence and is generally the first sign of trust for a project, but in no way guarantees that a team will not remove *all* liquidity (“Rug Pull”), sell off tokens, or completely exit scam. There is also no way to prevent private sale holders from selling off their tokens. It is ultimately your responsibility to read through all documentation, social media posts, and contract code of each individual project to draw your own conclusions and set your own risk tolerance.

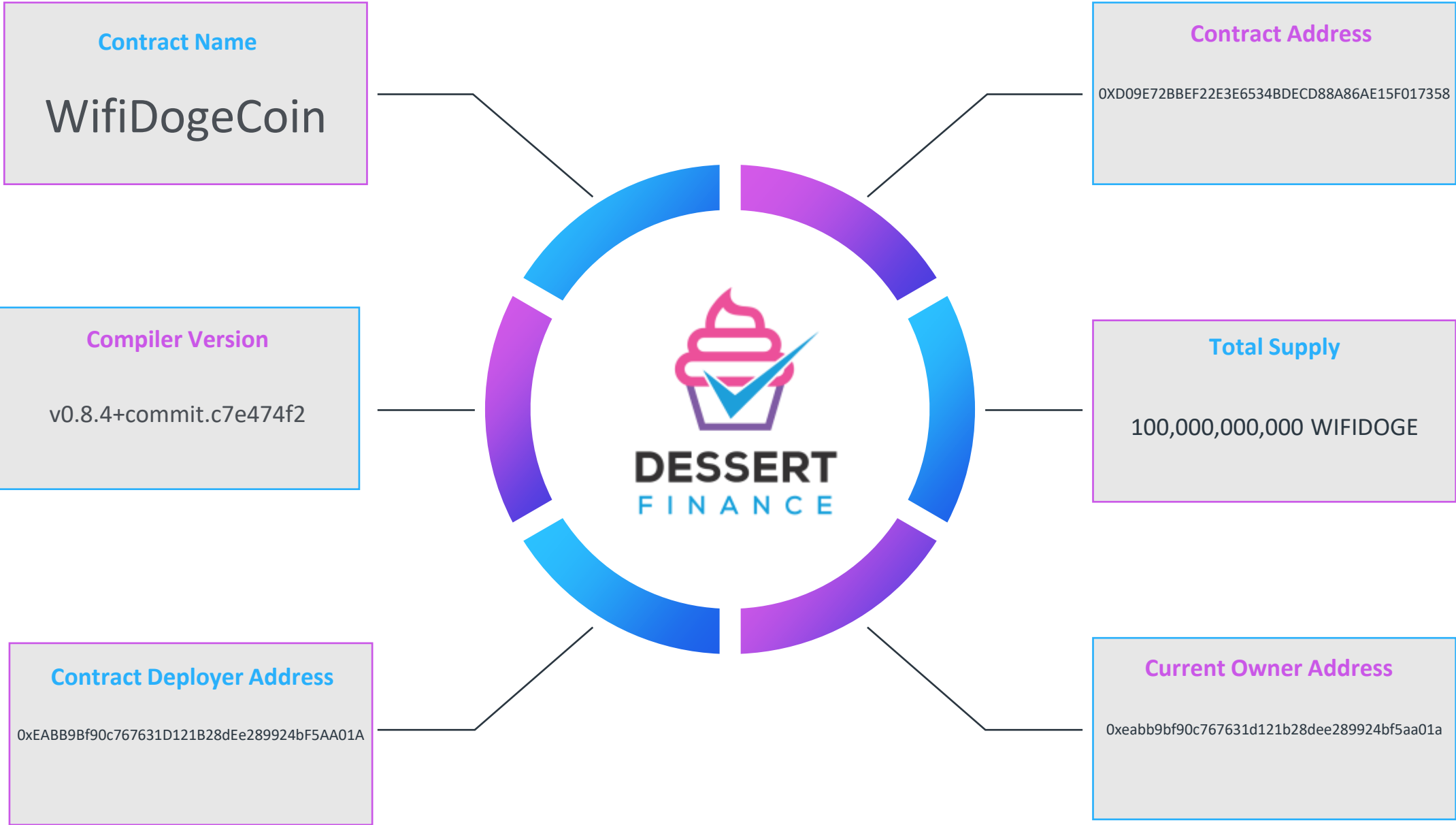
Dessert Finance in no way takes responsibility for any losses, nor does Dessert Finance encourage any speculative investments. The information provided in this audit is for information purposes only and should not be considered investment advice.

Table of Contents



1. Contract Code Audit – Token Overview
2. BEP-20 Contract Code Audit – Overview
3. BEP-20 Contract Code Audit – Vulnerabilities Checked
4. Contract Code Audit – Contract Ownership
5. Liquidity Ownership – Locked / Unlocked
6. Contract Code Audit – Mint Functions
7. Contract Transaction Fees
8. Website Overview
9. Social Media
10. Top Token Holders/Wallets
11. Location Audit
12. Review of Team
13. Roadmap
14. Disclaimers

Contract Code Audit – Token Overview



BEP-20 Contract Code Audit – Overview

Dessert Finance was commissioned to perform an audit on Wifi Doge Coin (WifiDoge)

```
Submitted for verification at BscScan.com on 2021-10-08
//
// Dependency file: @openzeppelin/contracts/utils/Context.sol
// SPDX-License-Identifier: MIT
// pragma solidity ^0.8.0;
/**
 * @dev Provides information about the current execution context, including the
 * sender of the transaction and its data. While these are generally available
 * via msg.sender and msg.data, they should not be accessed in such a direct
 * manner, since when dealing with meta-transactions the account sending and
 * paying for execution may not be the actual sender (as far as an application
 * is concerned).
 *
 * This contract is only required for intermediate, library-like contracts.
 */
abstract contract Context {
    function _msgSender() internal view virtual returns (address) {
        return msg.sender;
    }

    function _msgData() internal view virtual returns (bytes calldata) {
        this; // silence state mutability warning without generating bytecode - see https://github.com/ethereum/solidity/issues/2691
        return msg.data;
    }
}

// Dependency file: @openzeppelin/contracts/access/Ownable.sol

// pragma solidity ^0.8.0;
// import "@openzeppelin/contracts/utils/Context.sol";
/**
 * @dev Contract module which provides a basic access control mechanism, where
 * there is an account (an owner) that can be granted exclusive access to
 * specific functions.
 *
 * By default, the owner account will be the one that deploys the contract. This
 * can later be changed with {transferOwnership}.
 *
 * This module is used through inheritance. It will make available the modifier
 * `onlyOwner`, which can be applied to your functions to restrict their use to
 * the owner.
 */
abstract contract Ownable is Context {
    address private _owner;

    event OwnershipTransferred(address indexed previousOwner, address indexed newOwner);

    /**
     * @dev Initializes the contract setting the deployer as the initial owner.
     */
    constructor () {
        address msgSender = _msgSender();

```

Contract Address

0xd09e72BBEF22e3e6534BDEcD88a86ae15F017358

TokenTracker

Wifi Doge Coin (WifiDoge)

Contract Creator

0xeabb9bf90c767631d121b28dee289924bf5aa01a

Source Code

Contract Source Code Verified

Contract Name

WifiDogeCoin

Other Settings

default evmVersion, MIT

Compiler Version

v0.8.4+commit.c7e474f2

Optimization Enabled

Yes with 200 runs

Code is truncated to fit the constraints of this document.

[The code in its entirety can be viewed here.](#)

BEP-20 Contract Code Audit – Vulnerabilities Checked

Vulnerability Tested	AI Scan	Human Review	Result
Integer Overflow	Complete	Complete	✓ Low / No Risk
Integer Underflow	Complete	Complete	✓ Low / No Risk
Correct Token Standards Implementation	Complete	Complete	✓ Low / No Risk
Timestamp Dependency for Crucial Functions	Complete	Complete	✓ Low / No Risk
Exposed _Transfer Function	Complete	Complete	✓ Low / No Risk
Transaction-Ordering Dependency	Complete	Complete	✓ Low / No Risk
Unchecked Call Return Variable	Complete	Complete	✓ Low / No Risk
Use of Deprecated Functions	Complete	Complete	✓ Low / No Risk
Unprotected SELFDESTRUCT Instruction	Complete	Complete	✓ Low / No Risk
State Variable Default Visibility	Complete	Complete	✓ Low Risk
Deployer Can Access User Funds	Complete	Complete	✓ Low / No Risk

The contract code is **verified** on BSCScan.

The vulnerabilities listed above were not found in the token's Smart Contract.

Contract Code Audit – Contract Ownership

Contract Ownership has not been renounced at the time of Audit



The contract ownership is not currently renounced.

We have placed the contract owner address below for your viewing:

[0xeabb9bf90c767631d121b28dee289924bf5aa01a](https://etherscan.io/address/0xeabb9bf90c767631d121b28dee289924bf5aa01a)

Liquidity Ownership – Locked / Unlocked

No locked liquidity information has been found.



This page will contain links to locked liquidity for the project if we are able to locate that information. Locked liquidity information was not found on the project's website.

Contract Code Audit – Mint Functions

This Contract Cannot Mint New WifiDoge Tokens.



We do understand that sometimes mint functions are essential to the functionality of the project.

A mint function was not found in the contract code.

Contract Transaction Fees

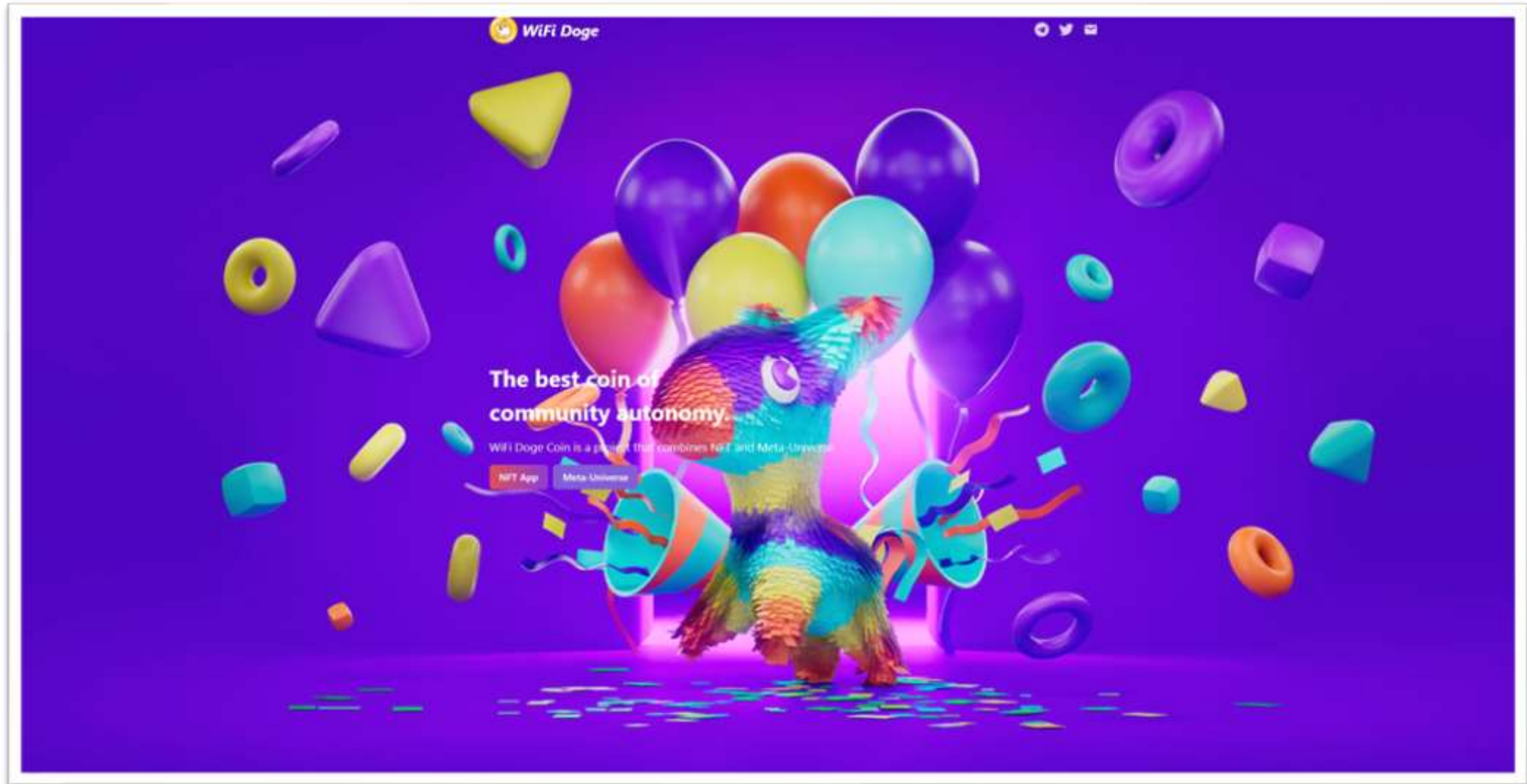
At the time of Audit the transaction fees (“tax”) listed below are the fees associated with trading. These fees are taken from every buy and sell transaction unless otherwise stated.

Contract agreement: The first issuance is based on the Binance Smart Chain (BSC), without any pre-sale or private placement, and is 100% promoted by the community. "WiFi Doge Coin" has 3 functions: dividend + LP acquisition + destruction. In each transaction, a 12.5% fee is required for the transaction, and the fee is divided into three ways. :

- 5% of the tokens will be redistributed to all holders, and holders will enjoy dividends.
- 5% of the tokens will be automatically paired with BNB and added to the LP flow pool as a liquidity pair. At the same time, the LP pool will be permanently locked and cannot be withdrawn.
- 2.5% of the tokens will permanently penetrate into the black hole and continue to destroy deflation.

Website Part 1 – Overview

www.wifidogecoin.com/

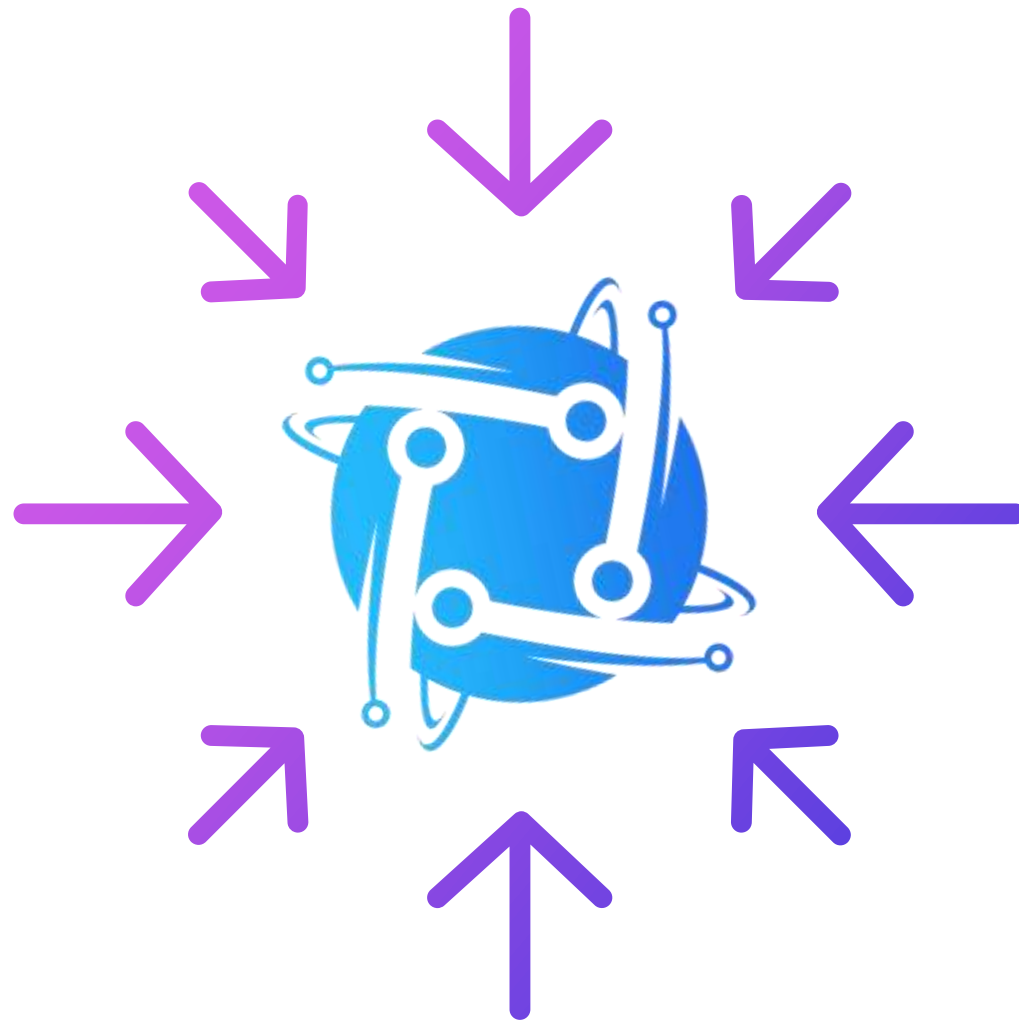


Above images are actual snapshots of the current live website of the project.

Website was registered on 10/08/2021, registration expires 10/08/2022.

X This does not meet the 3 year minimum we like to see on new projects.

Website Part 2 – Checklist



- ✓ Mobile Friendly
- ✓ No JavaScript Errors
- ✓ Spell Check
- ✓ SSL Certificate

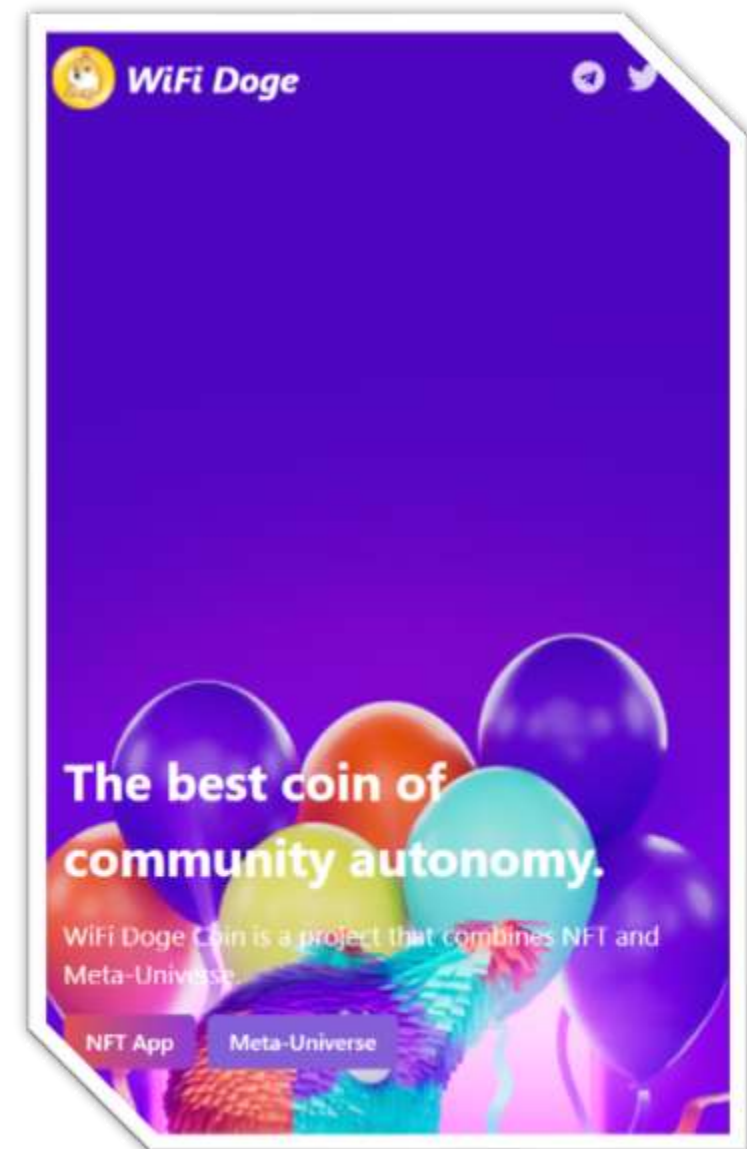
The website contained no JavaScript errors. No typos, or grammatical errors were present, and we found a valid SSL certificate allowing for access via https.

No additional issues were found on the website.

Website Part 3 – Responsive HTML5 & CSS3

No issues were found on the Mobile Friendly check for the website. All elements loaded properly and browser resize was not an issue. The team has put a considerable amount of thought and effort into making sure their website looks great on all screens.

No severe JavaScript errors were found. No issues with loading elements, code, or stylesheets.



Website Part 4 (GWS) – General Web Security



SSL CERTIFICATE

A valid SSL certificate was found. Details are as follows:

Offered to: wifidogecoin.com

Issued by: Cloudflare Inc

Valid Until: 10/07/2022



CONTACT EMAIL

A valid contact email was found on the official website. Contact email is listed as shown below:

[Contact](mailto:WifiDoge@email.com)

WifiDoge@email.com



SPAM / MALWARE / POPUPS

No malware found

No injected spam found

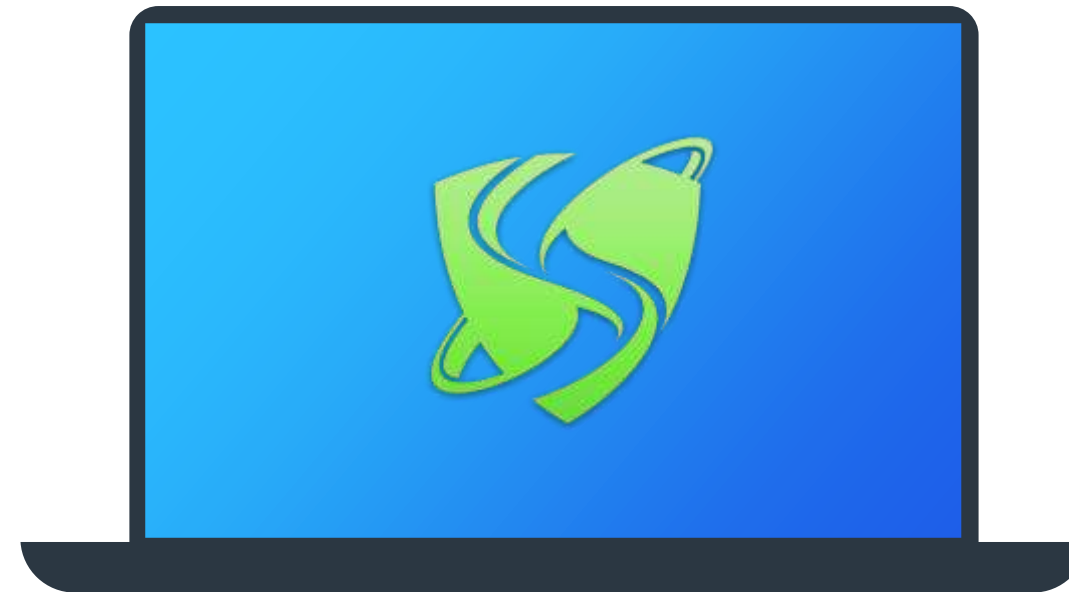
No internal server errors

No popups found

Domain is marked clean by Google, McAfee, Sucuri Labs, & ESET



Social Media

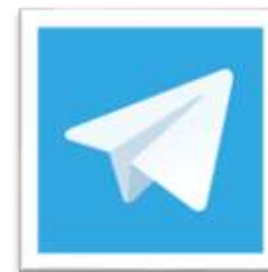


We were able to locate a variety of Social Media networks for the project.

All links have been conveniently placed below.



[Twitter](#)



[Telegram](#)

X At least 3 social media networks were found.

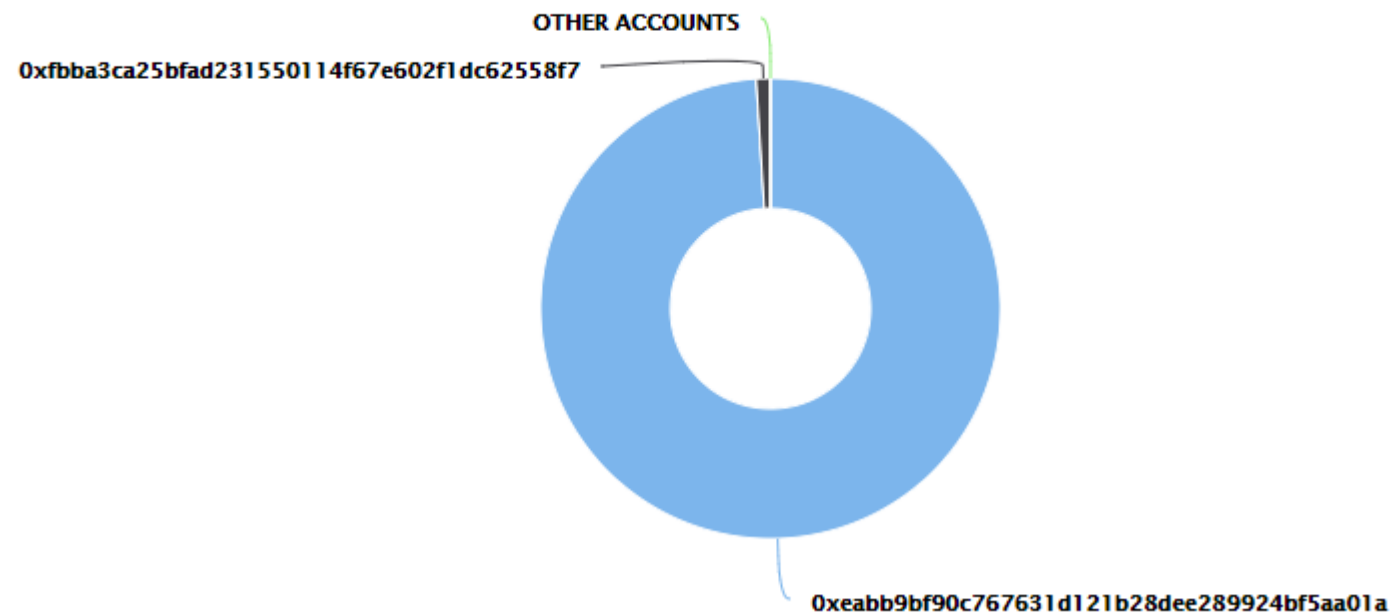
Top Token Holders

The entire supply was in two wallets at the time of audit. We expect this to change as the project goes through initial distribution phases. Please use the link below to view the most up-to-date holder information.

[Click here to view the most up-to-date list of holders](#)

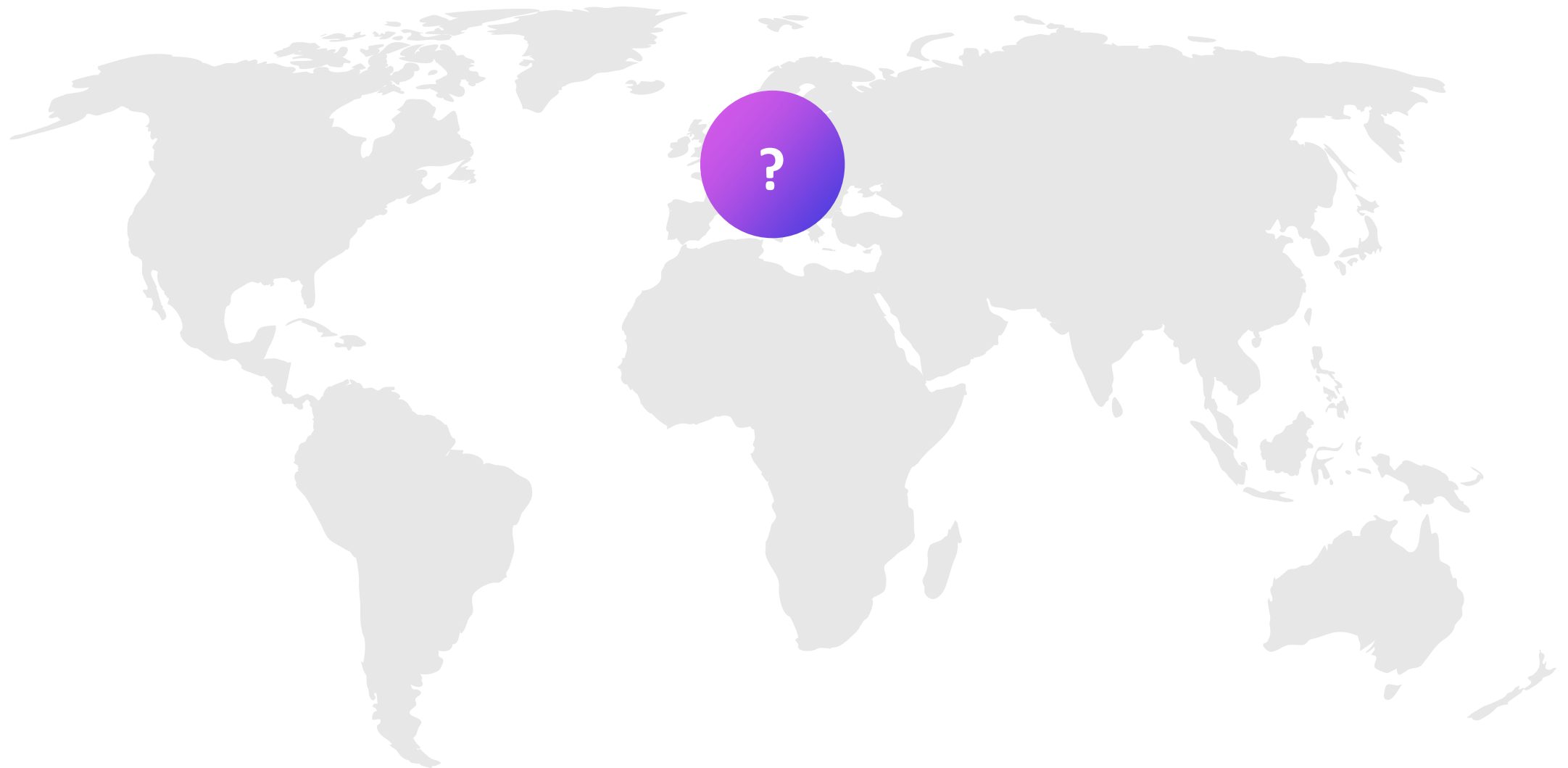
Wifi Doge Coin Top 100 Token Holders

Source: BscScan.com



Location Audit

We were unable to identify a primary location for the project at this time or a location has not been declared.



Team Overview

1. Founding team

Orston, CEO of the WiFi Doge platform, graduated from the University of Minnesota Twin Cities, formerly the IBM Technical Supervisor, responsible for the design, management and technical strategy of the power architecture, and is a well-known expert in the field of reliable power design for servers worldwide. Currently, he leads the team to develop a server cluster and mining system based on blockchain technology.

Richard Song-graduated from Nanyang Technological Institute with a PhD in computer science. Worked at IBM Computer Research Center. Through the paper "New Directions in Cryptography", he was exposed to digital cryptography, and verified the feasibility of distributed ledger through asymmetric encryption and elliptic curve algorithm.

Samuel-graduated from the University of Singapore with a Ph.D., and his research interests are in digitalization and financial clearing. Good at natural language processing. He has participated in a number of blockchain projects, including blockchain and social, Internet of Things and digitization, blockchain financial research and other projects, and participated in technical research in the Microsoft Digital Technology Laboratory.

2. Technical team

Adrian-American C language expert, blockchain technology expert, long-term research on the application of blockchain technology in the financial field. Responsible for cross-platform transplantation of mining algorithms for Bitcoin, ETH and other virtual currencies and development and management of mining machine software. He has extensive experience in the technical architecture of virtual digital currency wallets and virtual digital exchanges.

Stanford-American senior programmer, graduated from California Institute of Technology, senior expert in blockchain technology application, expert in DeFi application. He has extensive experience in big data parallel computing and distributed algorithm optimization, and has in-depth research in blockchain, cryptography, and data mining.

Kazuo Yamamoto-graduated from Harvard University, good at intelligent voice technology, social network and traceability technology, Python, application development. In the field of intelligent interaction, he has more than 100 professional works and more than 80 core patents. At the same time, he is also the drafter of many international standards. Dr. Yamamoto provides overall consulting services for the project, helps the project to achieve the implementation of the project and provides strategic support.

Giles-technical developer, master of computer science from Harvard University, Python language expert, blockchain technology engineer. His research involves data mining, artificial intelligence and algorithm optimization. Responsible for the construction and optimization of the project's artificial intelligence algorithm.

Hubery-program developer, senior engineer in the application of blockchain technology, with senior development experience in the field of private social networks. He has 15 years of experience in the Internet industry, is proficient in multiple computer languages, is good at designing long-term, high-concurrency, and usable architectures, and has rich experience in R&D management.

Jonny Wong-Graduated from the University of Hong Kong, good at blockchain and encrypted communication technology, and has long been concerned about the application of blockchain technology. Proficient in the principles and implementation of mainstream blockchain technologies such as Bitcoin, Ethereum, and HyperLedger, and have a deep understanding and rich practice in blockchain consensus mechanisms, smart contracts, cross-chain technology, side-chain technology, and privacy protection.

Roadmap

A roadmap was found on the official website, we have conveniently placed it on this page for your viewing.

The WiFi Doge development plan is clear and can be divided into three stages in terms of availability:

- Initial planning: open NFT blind box, auction
- Mid-term plan: Open Ethereum and Meta universe
- Later planning: Realize the Internet of Everything

Adhering to the principles of openness, fairness, fairness, and transparency, WiFi Doge will work hard to achieve the true landing and application of the Internet of Everything in the future.

First, WiFi Doge set up an executive team to clarify business development needs, determine the design ideas of Binance Smart Chain WiFi Doge DAPP, formulate preliminary development and operation plans, and complete white papers, token development and demos. Tokens are issued and online exchanges are formed to form trading pairs, which are combined through the blockchain to open up the flow of digital tokens.

Then, WiFi Doge provides a block link interface framework, which not only supports the third-party ecology on the Ethereum public chain, but will also build its own public chain main chain in the future, allowing users and developers to easily and efficiently create blockchain-based applications . The executive team promotes the project in accordance with the plan, including the development of dual-chain basic components, application modules, and smart contract standards, and gradually improving the community governance related systems.

Finally, the test chain is launched to complete the test and upgrade. Complete node construction, including purchase of free node servers, expansion of community nodes, etc. Complete the development of the developer community, carry out publicity activities, set up a bounty plan, and attract global technology development talents. WiFi Doge login to the top 20 exchanges in the world including Binance.

Disclaimer



The opinions expressed in this document are for general informational purposes only and are **not intended to provide specific advice or recommendations for any individual or on any specific investment**. It is only intended to provide education and public knowledge regarding BSC projects. This audit is only applied to the type of auditing specified in this report and the scope of given in the results. Other unknown security vulnerabilities are beyond responsibility. Dessert Finance only issues this report based on the attacks or vulnerabilities that already existed or occurred before the issuance of this report. For the emergence of new attacks or vulnerabilities that exist or occur in the future, Dessert Finance lacks the capability to judge its possible impact on the security status of smart contracts, thus taking no responsibility for them. The smart contract analysis and other contents of this report are based solely on the documents and materials that the contract provider has provided to Dessert Finance or was publicly available before the issuance of this report (issuance of report recorded via block number on cover page), if the documents and materials provided by the contract provider are missing, tampered, deleted, concealed or reflected in a situation that is inconsistent with the actual situation, or if the documents and materials provided are changed after the issuance of this report, Dessert Finance assumes no responsibility for the resulting loss or adverse effects. Due to the technical limitations of any organization, this report conducted by Dessert Finance still has the possibility that the entire risk cannot be completely detected. Dessert Finance disclaims any liability for the resulting losses.

Dessert Finance provides no guarantees against the sale of team tokens or the removal of liquidity by the project audited in this document. Even projects with a low risk score have been known to pull liquidity, sell all team tokens, or exit-scam. Please exercise caution when dealing with any cryptocurrency related platforms.

The final interpretation of this statement belongs to Dessert Finance.

Dessert Finance highly advises against using cryptocurrencies as speculative investments and they should be used solely for the utility they aim to provide.



Thank You

DESSERT FINANCE PROJECT AUDIT HAS BEEN COMPLETED FOR WIFI DOGE COIN (WIFIDOGE) 1 DSRT HAS BEEN SENT TO AUDITED PROJECT'S CONTRACT ADDRESS FOR VERIFICATION OF THIS AUDIT AT BLOCK NUMBER: **11857352**

www.dessertswap.finance
<https://t.me/dessertswap>